

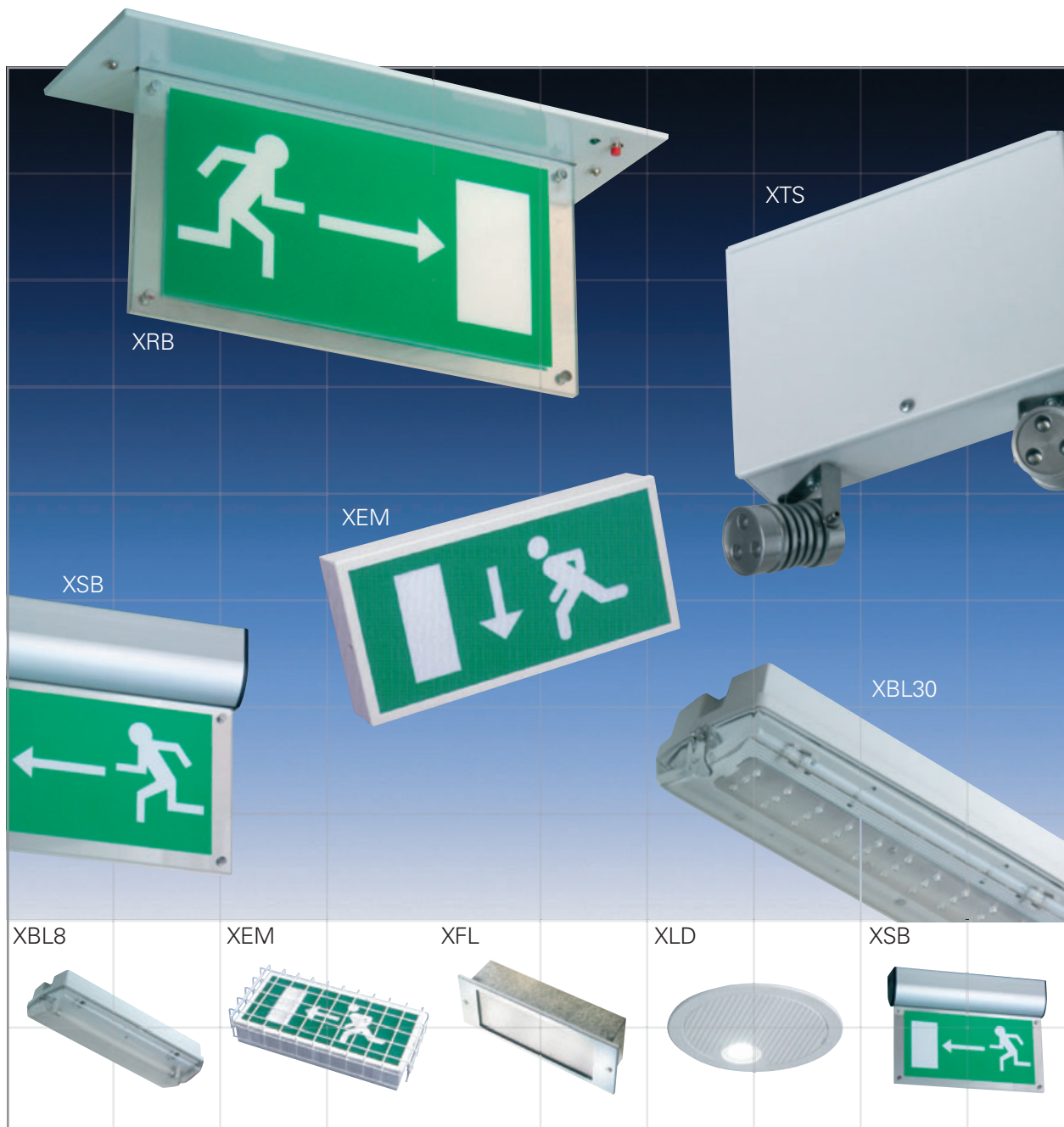
# X Series

[www.fluorel.co.uk/products/utility.htm](http://www.fluorel.co.uk/products/utility.htm)

**X  
Series**




07/09



- A comprehensive range of cost effective emergency lighting
- LED and T5 lamp sources
- Interior and exterior versions
- Recessed and surface mounted
- Single and double sided
- Suspended, wall or ceiling mounted
- High power LED twin spots
- Self test options
- Decorative finishes available




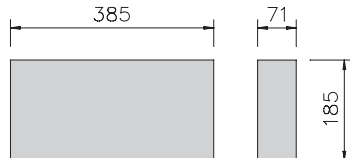
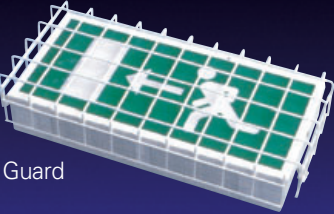
Surface mounted 3 hour duration all polycarbonate IP65 rated bulkhead available with either 30 LED's or 8w fluorescent lamp. The white body and clear optical diffuser offers unobtrusive maintained or non maintained emergency lighting. Ideally suited to interior or exterior applications. A self adhesive legend kit is available to make up direction signage as required.

<p><b>XBL30</b></p> 	<p><b>XBL30 (30 x LED)</b></p> <p>Maintained</p> <p>XBL30M3</p>	
	<p><b>XBL8 (1 x 8w T5)</b></p> <p>Maintained</p> <p>XBL8M3</p>	
<p><b>XBL8</b></p> 	<p>Non Maintained</p> <p>XBL8NM3</p>	

**Direction Legends**

If direction legends are required please add suffix .../2 Arrow Left, .../3 Arrow Right or .../5 Arrow Down

The XEM range is designed to illuminate Exit legends and offer 3 hour duration escape route illumination via it's downlighting section. All steel construction body and front frame with opal Tpa polycarbonate diffuser panels and utilising an 8w T5 lamp. Available in White, Chrome and Brass decorative finishes.

<p><b>XEM</b></p> 	<p><b>XEM</b></p> <p>Maintained</p> <table border="0"> <tr><td>XEM8M3/5</td><td>White Finish</td></tr> <tr><td>XEM8M3/5/ST</td><td>Self Test White Finish</td></tr> <tr><td>XEM8M3/5/CH</td><td>Chrome Finish</td></tr> <tr><td>XEM8M3/5/CH/ST</td><td>Self Test Chrome Finish</td></tr> <tr><td>XEM8M3/5/BR</td><td>Brass Finish</td></tr> <tr><td>XEM8M3/5/BR/ST</td><td>Self Test Brass Finish</td></tr> </table>	XEM8M3/5	White Finish	XEM8M3/5/ST	Self Test White Finish	XEM8M3/5/CH	Chrome Finish	XEM8M3/5/CH/ST	Self Test Chrome Finish	XEM8M3/5/BR	Brass Finish	XEM8M3/5/BR/ST	Self Test Brass Finish	
	XEM8M3/5	White Finish												
XEM8M3/5/ST	Self Test White Finish													
XEM8M3/5/CH	Chrome Finish													
XEM8M3/5/CH/ST	Self Test Chrome Finish													
XEM8M3/5/BR	Brass Finish													
XEM8M3/5/BR/ST	Self Test Brass Finish													
<p>Non Maintained</p> <table border="0"> <tr><td>XEM8NM3/5</td><td>White Finish</td></tr> <tr><td>XEM8NM3/5/ST</td><td>Self Test White Finish</td></tr> <tr><td>XEM8NM3/5/CH</td><td>Chrome Finish</td></tr> <tr><td>XEM8NM3/5/CH/ST</td><td>Self Test Chrome Finish</td></tr> <tr><td>XEM8NM3/5/BR</td><td>Brass Finish</td></tr> <tr><td>XEM8NM3/5/BR/ST</td><td>Self Test Brass Finish</td></tr> </table>	XEM8NM3/5	White Finish	XEM8NM3/5/ST	Self Test White Finish	XEM8NM3/5/CH	Chrome Finish	XEM8NM3/5/CH/ST	Self Test Chrome Finish	XEM8NM3/5/BR	Brass Finish	XEM8NM3/5/BR/ST	Self Test Brass Finish		
XEM8NM3/5	White Finish													
XEM8NM3/5/ST	Self Test White Finish													
XEM8NM3/5/CH	Chrome Finish													
XEM8NM3/5/CH/ST	Self Test Chrome Finish													
XEM8NM3/5/BR	Brass Finish													
XEM8NM3/5/BR/ST	Self Test Brass Finish													
<p><b>Guard</b></p> 														

**Guard** - For areas where heavy impact protection is required such as ball sport areas or manufacturing areas, a fabricated white epoxy coated steel wire guard is available to fix around the sign onto the mounting surface.  
Part number – XEM/WG (Guard only – order required sign separately)

**Direction Legends**

Please specify direction legend when ordering – add suffix .../2 Arrow Left, .../3 Arrow Right, .../5 Arrow Down (Arrow down supplied as standard unless advised)

A maintained recessed ceiling box with a hanging double sided blade sign. Utilising 15 low energy high output LED's. Available in White, Chrome or Brass finish and self test option if required.

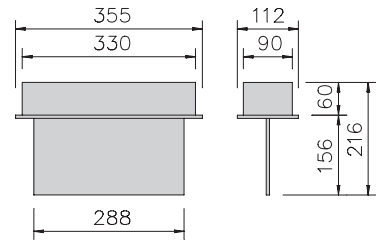
## XRB



### XRB

#### Maintained

XRB15M3/5	White Finish
XRB15M3/5/ST	Self Test White Finish
XRB15M3/5/CH	Chrome Finish
XRB15M3/5/CH/ST	Self Test Chrome Finish
XRB15M3/5/BR	Brass Finish
XRB15M3/5/BR/ST	Self Test Brass Finish



Please note that this product is not available as a non maintained version.

### Direction Legends

If direction legends are required please add suffix .../2 Arrow Left, .../3 Arrow Right or .../5 Arrow Down (Arrow down supplied as standard unless advised)

The versatile maintained XSB sign system utilises 15 high output energy efficient LED's and can be suspended, ceiling or wall mounted. Double sided blade is illuminated from above and the body is available in White, Brushed Silver or Brushed Brass finish. Self test options available.

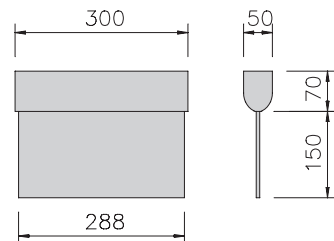
## XSB



### XSB

#### Maintained

XSB15M3/5	Silver Finish
XSB15M3/5/ST	Self Test Silver Finish
XSB15M3/5/W	White Finish
SB15M3/5/W/ST	Self Test White Finish
XSB15M3/5/BR	Brass Finish
XSB15M3/5/BR/ST	Self Test Brass Finish



Please note that this product is not available as a non maintained version.

#### Accessories

XSB/CB	Ceiling Bracket Silver Finish
XSB/CB/W	Ceiling Bracket White Finish
XSB/CB/BR	Ceiling Bracket Brass Finish
XSB/WB	Wall Bracket Silver Finish
XSB/WB/W	Wall Bracket White Finish
XSB/WB/BR	Wall Bracket Brass Finish
XSB/WS	Wire Suspension set

### Direction Legends

If direction legends are required please add suffix .../2 Arrow Left, .../3 Arrow Right or .../5 Arrow Down (Arrow down supplied as standard unless advised)

For use in larger areas such as sports halls, retail and commercial areas, the new high power LED driven twin spot emergency luminaire addresses the issues of previous old bulky twin halogen twin spots of the past. Compact, discreet, lighter and with 3 x 1 watt LED machined heads this attractive unit can be surface, wall or ceiling mounted and even suspended if required. Available in White or Brushed Silver finish.

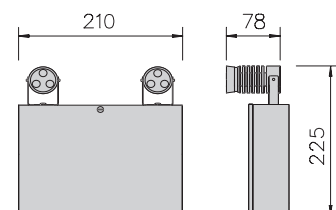
## XTS



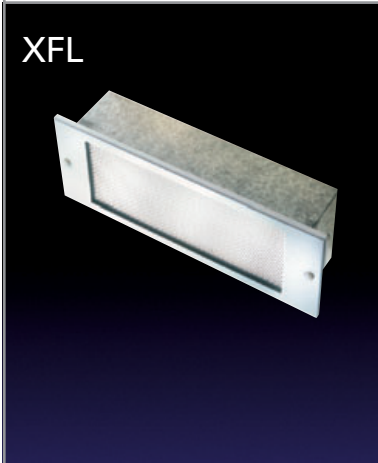
### XTS

#### Non Maintained

XTS6NM3	White Finish
XTS6NM3/S	Brushed Silver Finish



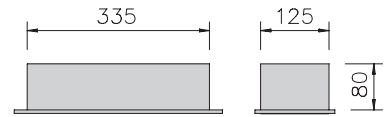
A recessed 8w 'brick light' type escape route luminaire for interior use with galvanised steel body and decorative front frame with prismatic Tpa polycarbonate front panel. The front frame is available in White, Chrome or Brass finish. An opal polycarbonate front panel and self adhesive direction legends are available as options. Please specify when ordering.



**XFL**

<b>XFL</b>	
<b>Maintained</b>	
XFL8M3	White Finish
XFL8M3/ST	Self Test White Finish
XFL8M3/CH	Chrome Finish
XFL8M3/CH/ST	Self Test Chrome Finish
XFL8M3/BR	Brass Finish
XFL8M3/BR/ST	Self Test Brass Finish

<b>Non Maintained</b>	
XFL8NM3	White Finish
XFL8NM3/ST	Self Test White Finish
XFL8NM3/CH	Chrome Finish
XFL8NM3/CH/ST	Self Test Chrome Finish
XFL8NM3/BR	Brass Finish
XFL8NM3/BR/ST	Self Test Brass Finish



**Options and Direction Legends**

Suffix .../O – Opal panel.

If direction legends are required please add suffix .../2 Arrow Left, .../3 Arrow Right or .../5 Arrow Down

Utilising low energy high output LED technology, the XL Series offers either flush recessed or surface mounted non maintained escape route lighting. XLD is a self contained unit that can be fully recessed or surface mounted while the XLR is a mini version for recessed mounting only. Both units are finished in white and feature self test operation.



**XLD**

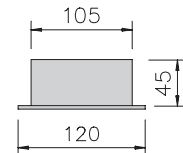
**XLR**

<b>XLD</b>	
<b>Non Maintained</b>	
XLD3NM3	3w LED

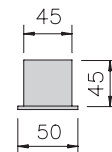
Self contained recessed or surface mounting.

<b>XLR</b>	
<b>Non Maintained</b>	
XLR3NM3	3w LED

Recessed mounting only. Batteries and inverter pack require remote mounting and can be inserted through the 45mm body cut out.



Cut out 105mm



Cut out 45mm

**Fluorel Lighting Limited**  
Designers and manufacturers  
of lighting fittings

Riverside Works, Broadmead Rd,  
Woodford Green, Essex, IG8 8PG  
Tel 020 8504 9691 Fax: 020 8506 1792  
[www.fluorel.co.uk](http://www.fluorel.co.uk)

